

K-SPRAY ASPHALT DISTRIBUTORS



GENERAL FEATURES

- Material tank in the range of 2000-18000 lt. depending on the model, chassis and vehicle capacity.
- Heating system with automatic diesel burner.
- Spray bar width up to 4.8 meters
- Direct and Indirect Heating Systems
- Precisely adjustable spray amount with computerized control system
- Proportional paving system that is not affected by Truck Speed
- Spray amount from 200 gr/m² to 3 kg/m²
- Single-operator operation controllable from the driver's cab.



K-Sprayer Asphalt Distributors:

This machine **works with** a fully automatic PLC controlled paving system. **It is also called a computerized system.** The operator enters the amount to be laid on the touch screen. It selects the laying width thanks to the controllers on the touch screen. Finally, it opens the lay button. When the machine moves, the system automatically detects the speed and paving width. According to these perceived values, the computer automatically calculates the amount of paving and accordingly makes accurate paving in kilograms per square meter. When the truck stops or the operator turns off the paving button, the system automatically cuts the pavement. If the paving width is changed while moving, the computer immediately takes action and achieves the desired value.

Operator capability is not very important in the use of this system .

Standard Components and Optional equipment:

	Base Module	Optional	
Tank Capacity	8000 Liters	14000 Liters	Custom Dimensions
Heating System	Direct heating with Flame tube	Flame tube + Heat exchanger system	Indirect Heating With Thermal oil heater
Spray Width	3600 mm	4800 mm	
Power Train	Truck PTO	External Diesel Engine	

K-SPRAY ASPHALT DISTRIBUTORS TECHNICAL SPECIFICATIONS

GENERAL FEATURES

Capacity	: 8000 - 14000 Liters
Spray Width	: 3.6 – 4.8 meters
Pump	: Submersible type FRACCAROLO FA/35 bitumen pump system with double 3-way valve.
Heating	: Direct heating system with Flame Tube and Baltur BTL 26 Automatic Diesel Burner (ITALY) or optional heating systems
Spray Bar	: 3.6 – 4.8 meters wide, pneumatically controlled spray bar with full circulation from the driver's cab.
Spray Nozzles	: Pneumatically controlled from the cab at intervals every 600mm. Spray nozzles are lined up every 100mm.
Power supply	: Truck PTO water
Audit	: Fully automatic spraying and cleaning feature from the cab thanks to IFM PLC with 7" IFM touch screen and ultrasonic radar speed sensor.
Chassis	: 4x2, 6x2, 6x4 truck and tow truck type products.

BITUMEN TANK

Standard Capacity	: 8000 liters (according to customer truck)
Wall Sheet Thickness	: 5 mm
Body Sheet Thickness	: 4 mm
Foot Sheet Thickness	: 5mm
Insulation	: 50 mm 80 density rock wool coated with 1mm 410 stainless steel

Optional Options

- 14000 Liter Bitumen Tank
- Special Production Tank Capacities in Different Capacities



(STD) HEATING SYSTEM – FLAME TUBE DIRECT HEATING SYSTEM

Type	: 1 x 8" Direct Heating System with flame pipe (2x in 14 m3 models)
Burner	: BALTUR BTL26
Fuel Type	: Diesel
Control System	: Thermostatic controls, tank temperature readings.
Heated Systems	: Bitumen tank
Temperature Control System	: Automatic control from the operator panel

(OPTIONAL) HEATING SYSTEM – DIRECT HEATING SYSTEM WITH FLAME PIPE + HOT OIL HEAT EXCHANGER

Type	: In addition to the Direct Heating System with flame tube, the hot oil heat exchanger mounted on the chimney group to heat the lines and spray bar
Circulating Oil	: Heat Transfer Oil
Circulation Pump	: Centrifugal type 3000 RPM
Control System	: Thanks to the thermostatic controls and valve system, the oil heating is deactivated when the hot oil line reaches the desired temperature. In this case, the flame pipe continues to heat the tank.
Hot Oil Heated Systems	: Spray bar, bitumen lines and circulation system
Temperature Control System	: Automatic control from the operator panel

(OPTIONAL) HEATING SYSTEM – INDIRECT HEATING SYSTEM WITH INDEPENDENT HOT OIL BOILER

Circulating Oil	: Heat Transfer Oil
Hot Oil Boiler	: 3 pass – P265 GH quality – 140.000 Kcal/Hour capacity hot oil boiler
Circulation Pump	: Centrifugal type
Circulation Pump Motor	: 1.1 kW 3000 RPM
Burner	: BALTUR BTL26 (Italian)
Fuel Type	: Diesel
In-tank Serpentine	: 2" Steel extruded coils 3.6mm wall thickness
Control System	: Fully automatic heating system, reading inlet, outlet and tank temperatures.
Oil Heated Systems	: Bitumen tank, spray bar, bitumen lines and circulation system
Temperature Control System	: Automatic control from the driver's cab



HYDRAULIC POWER TRANSMISSION AND CONTROL UNIT

Hydraulic Pump	: LINDE/DANFOSS proportional hydraulic pump
Hydraulic Motor	: LINDE/DANFOSS axial piston type hydraulic motor
Hydraulic Valve	: Proportional electrically controlled hydraulic system
Power Transmission	: PTO transmission from vehicle transmission

Options:

Standalone power pack for situations where the truck PTO is not available.
Kubota 25 HP diesel engine option.

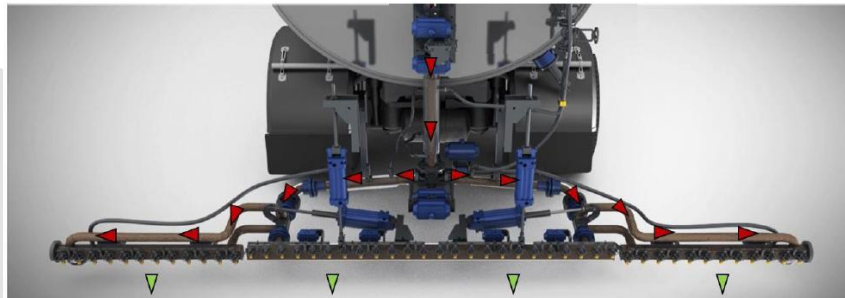
BITUMEN PUMP

Type	: FRACCAROLO FAI/35 buried type helical gear pump
Speed Control	: Fully automatic proportional spray control from the cab
Maximum Pressure	: 10 bar
Control System	: Automatic controls from the driver's cab with continuous pump flow control with the rpm counter on the pump



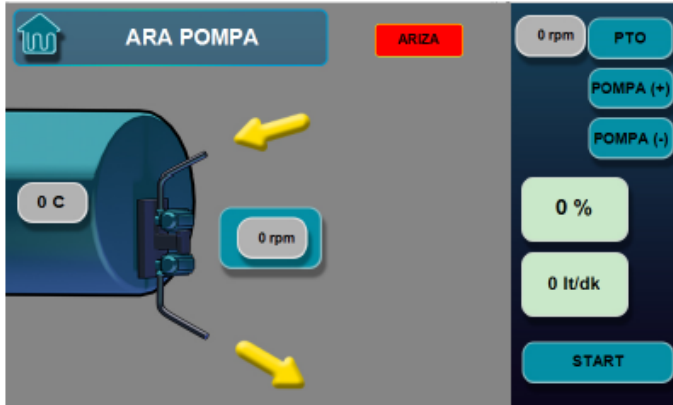
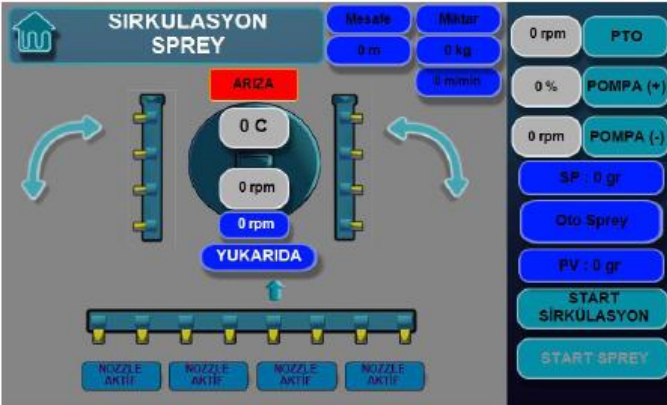
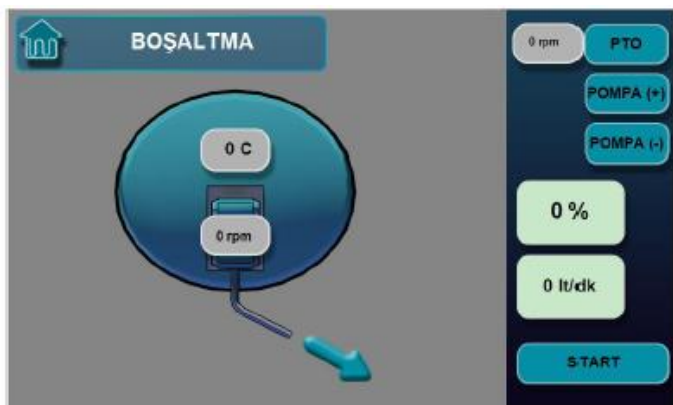
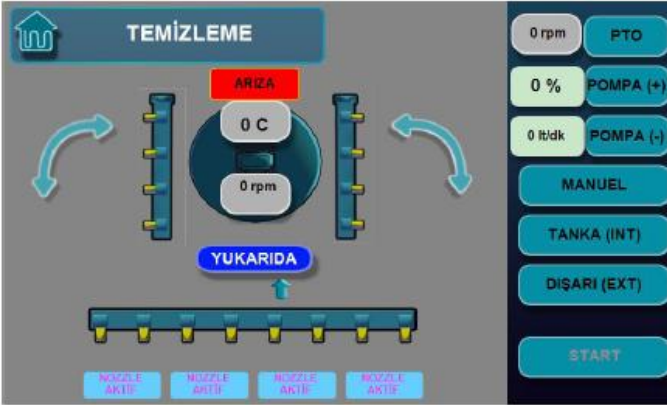
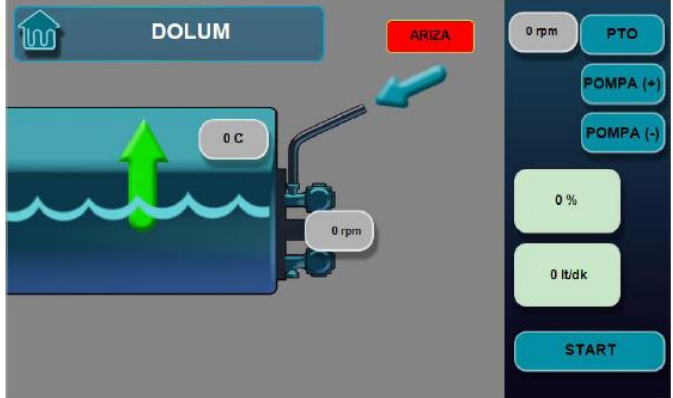
SPRAY BAR AND CIRCULATION SYSTEM

Traffic Type	: Spray bar with full circulation.
Total Spray Bar Width	: 3.600mm (4.800mm Optional)
Center Bar Width	: 2,400 mm
Left bar Width	: 600mm
Right bar Width	: 600mm
Bar Control System	: Pneumatic control from the driver's cab
Nozzle Valve Control System	: Pneumatic control from the driver's cab
Nozzle Type	: 1 set of bitumen (800 grams/square meter-2500 grams/square meters) 1 set of emulsion (200 grams/square meter-800 grams/square meter)
Control System	: Digital operator control panel



CONTROL SYSTEM AND OPERATOR PANEL

Type	: Control with specially developed 7" IFM display and IFM PLC controller System
Speed Control	: Speed control radar sensor
Control System	: Fully automatic control system from the driver's cab.
Panel Content	: Vehicle speed (meters/minute), spraying distance (meters), pump capacity (liters/minute), Sprayed capacity (liters/square meter)
Operating Modes	: -Filling mode, -Cleaning mode, -Circulation mode, -Spray mode -Discharge mode, -Intermediate pump mode



COMPRESSOR SYSTEM

Type : 7-8 bar operating pressure provided by the vehicle compressor

ACCESSORIES AND OTHER EQUIPMENT

Operating instructions and spare parts catalogue, 4 metre hand bar, rear light, Swivel warning light

